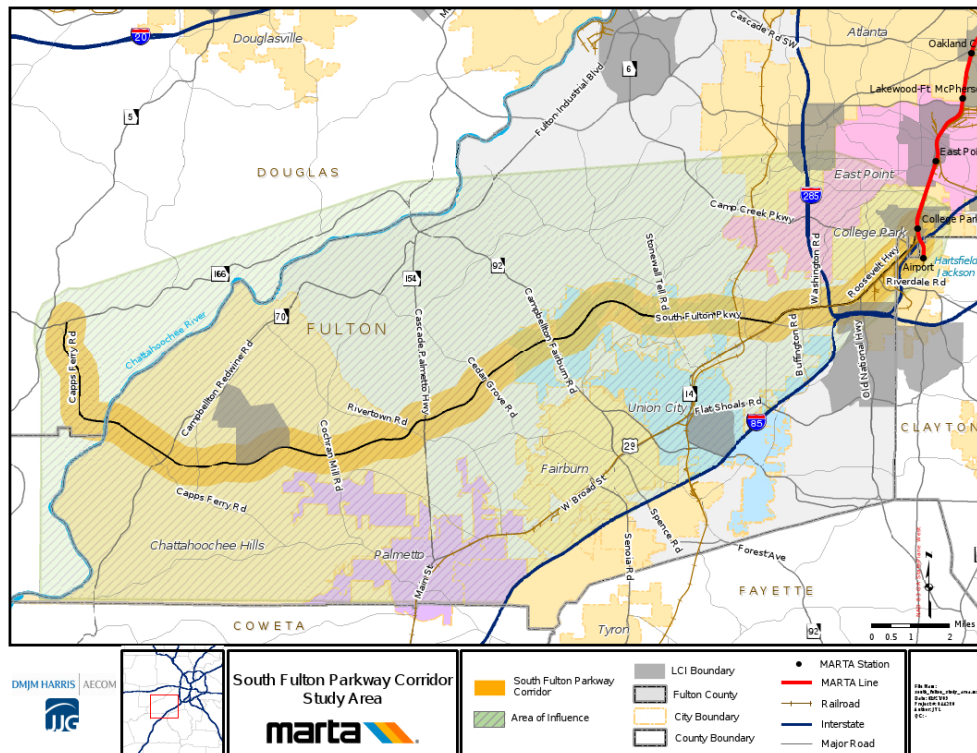


What is the purpose of the study?

The purpose of the study is to provide a high-level assessment and evaluation of potential transit improvements given existing and proposed land use and transportation characteristics in the South Fulton Parkway corridor.

What is the study area?

The study area encompasses the entire segment of South Fulton Parkway from Douglas County to Roosevelt Highway and will also investigate a potential connection into the MARTA rail system. A map of the study area is provided below.



What are the major activities associated with the study?

The primary study activities will include:

- Identification of baseline conditions and a review of previous studies to provide context;
- The development of land use and transportation scenarios to identify potential transit alternatives to serve the corridor; and
- The evaluation of these alternatives to provide final recommendations and next steps to further the implementation of transit in the corridor.

How long will the study take place?

The study recently kicked off in February and is expected to be completed in July of 2009.