



Public Meeting

May 22, 2012
Mimosa Elementary School



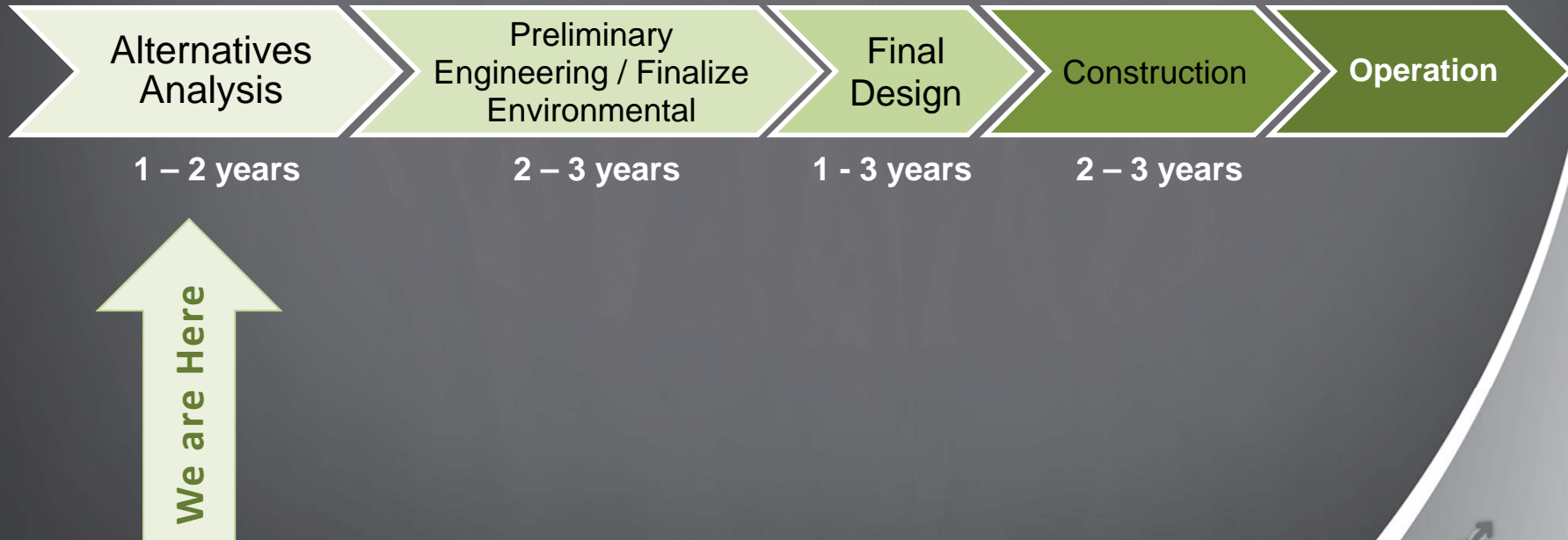
Today's Meeting Purpose

- Where We Are
- What We've Heard
- Why is Transportation and Land Use Important
- What are Transit Modes
- Your Input!
 - Potential Transit Connection Options

Where We Are

Federal Project Development Process

Project Development: Typically 6 – 12 years



Connect 400 Alternatives Analysis Schedule



Importance of this Study

- Evaluate feasibility of increased transit service
- Identify potential for high-capacity transit project implementation

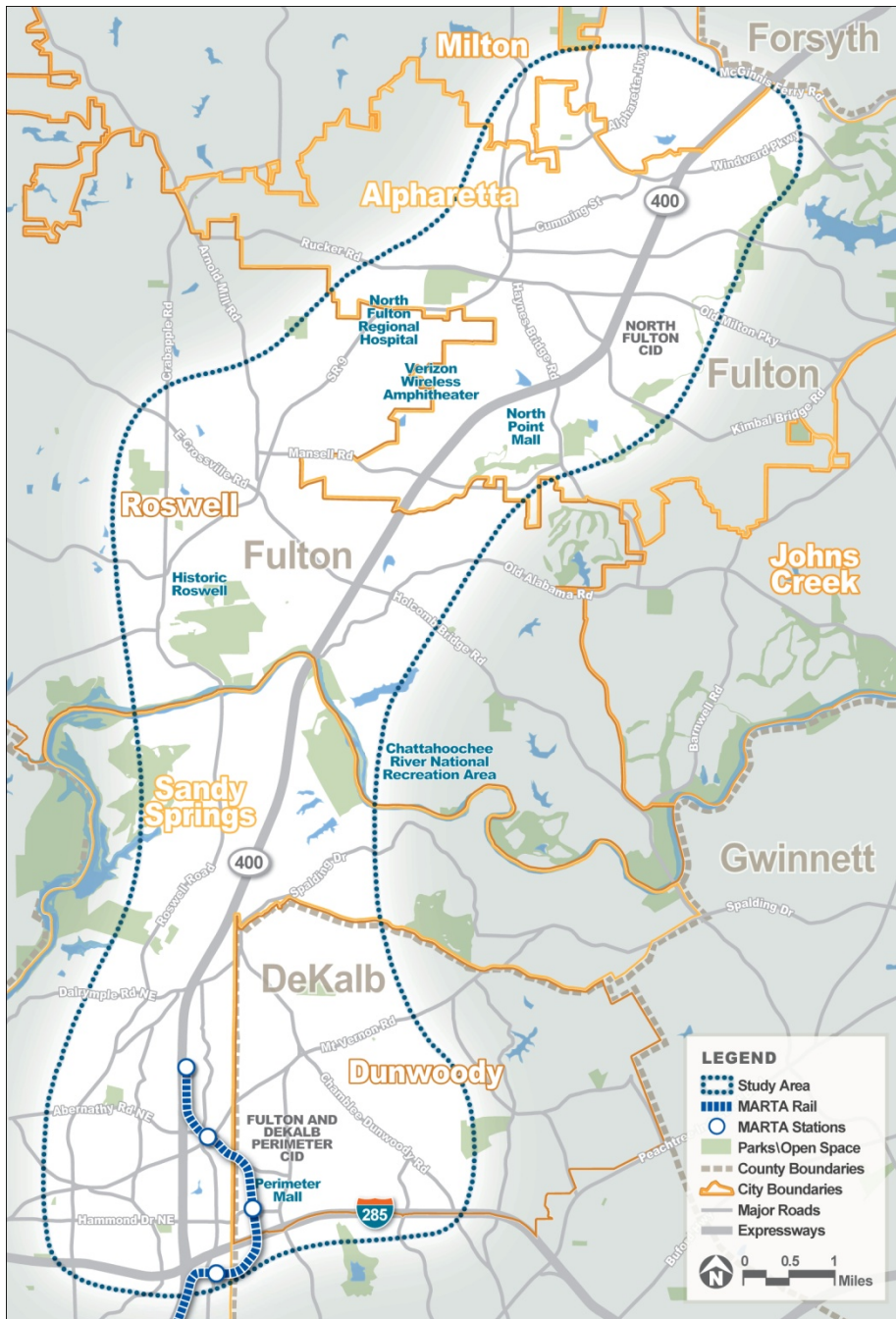
Differentiation Between Past Studies

- Focused investment along GA 400 corridor
- Assess land development over past decade
- Consider demographic changes in study area
- Advance planning process from previous studies



Study Area

- I-285 to McGinnis Ferry
- Study area of influence:
 - Sandy Springs
 - Dunwoody
 - Roswell
 - Alpharetta
 - Milton
 - Mountain Park
 - Johns Creek
 - Atlanta
 - DeKalb, Fulton, Gwinnett, Forsyth and Cobb Counties



What We've Heard

Community Input: Where does it Come From?

Stakeholders



- Public Agencies
- Business Organizations
- Private Companies
- Advocacy Groups

Advisory Committees



- Technical Advisory Committee (TAC)
- Stakeholder Advisory Committee (SAC)

You



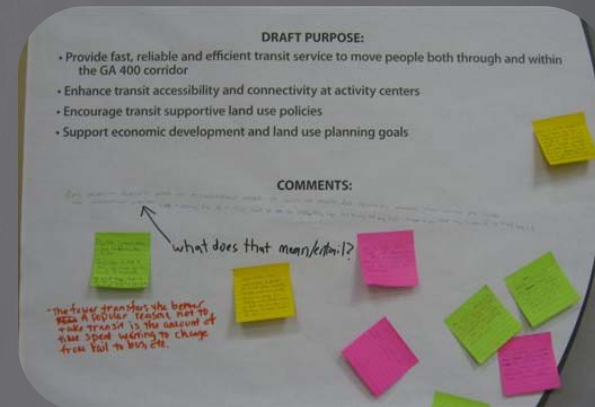
- Public Meetings
- Open House/Workshop
- Speakers Bureau
- Newsletters
- Facebook
- Website
- E-mail



What We've Heard

Key Topics:

- Travel Reliability
- Service Type
- Connectivity
- Congestion
- Outreach Needed
- Land Use
- Funding/Cost
- Policy



Purpose

The purpose of the project is to provide reliable, convenient, efficient, and sustainable transit service in the GA 400 corridor by:

- Providing high capacity transit
- Improving transit linkages and coverage
- Enhancing mobility and accessibility



Need

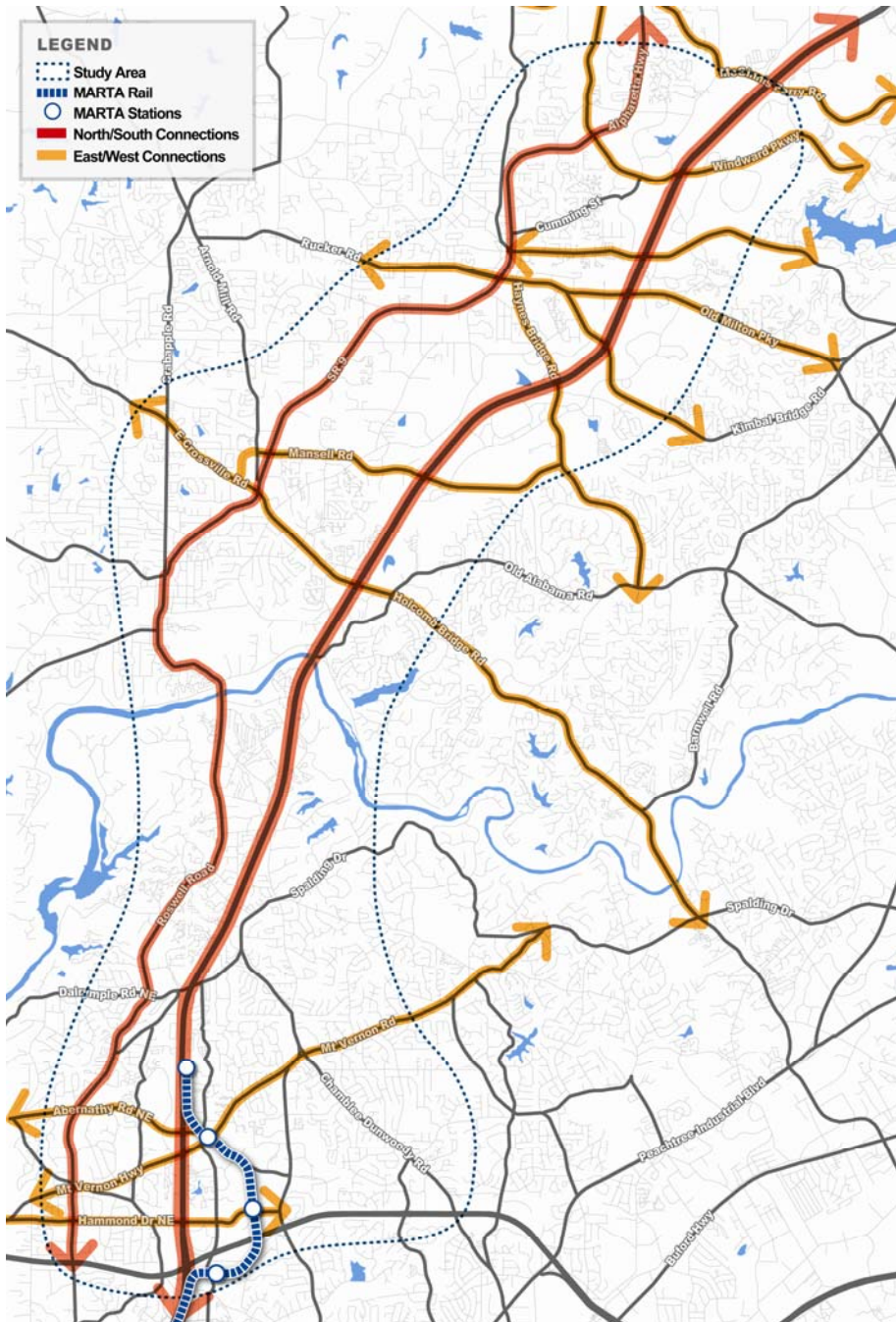
Travel demand - Increased travel demand and traffic congestion is expected to result from Population, employment, and households.

Transit mobility - There is inadequate transit including: east-west travel; and limited north-south roadway connectivity across the Chattahoochee River.



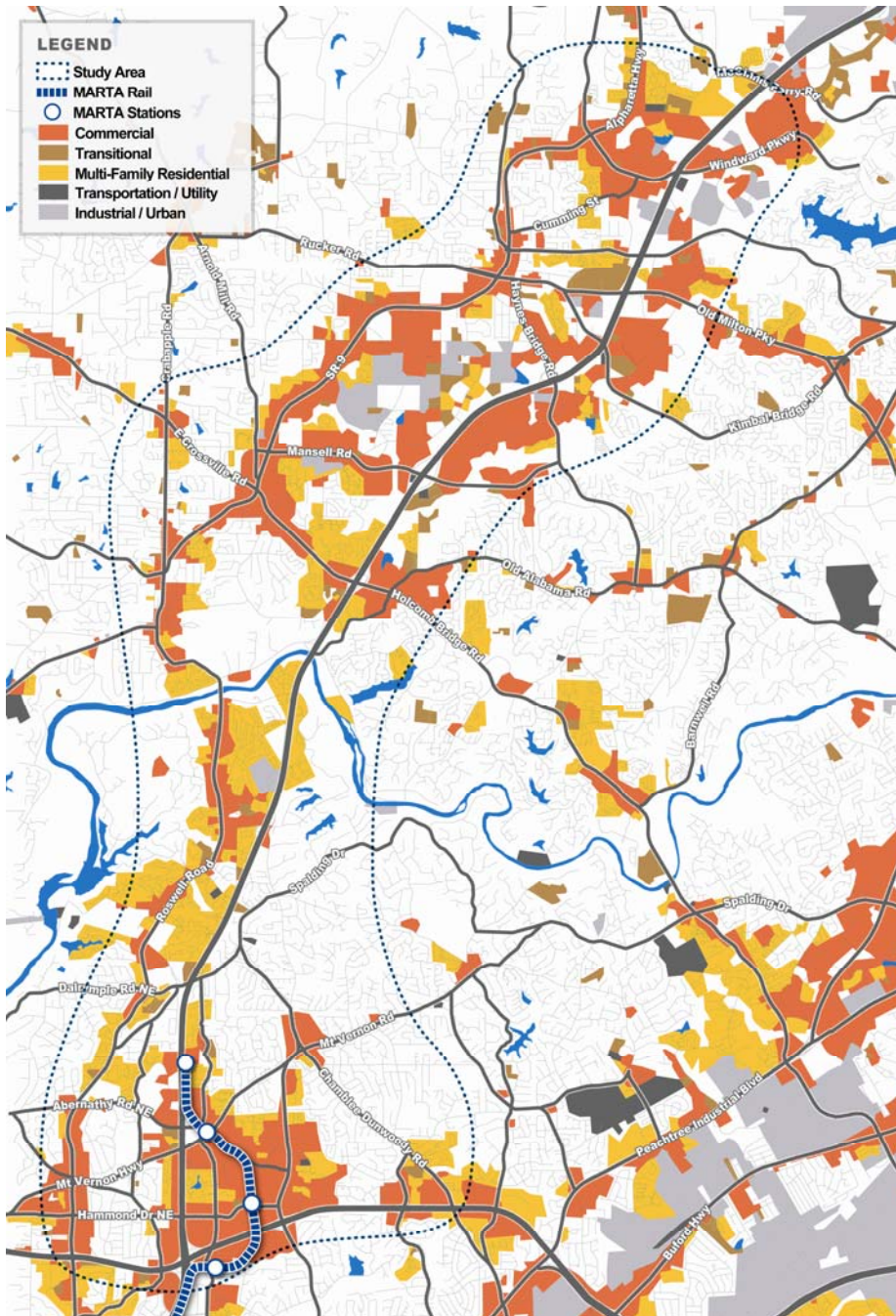
Goal #1: Improve Mobility and Access

- Congestion worsens by 2040 even with additional capacity
- Half of trips starting in study area also end in the study area



Goal #2: Support Land Use & Economic Development Planning

- Employment in the area is expected to increase over 45%
- Commercial land uses comprise 25% of study area
- Majority of land use within the area is residential

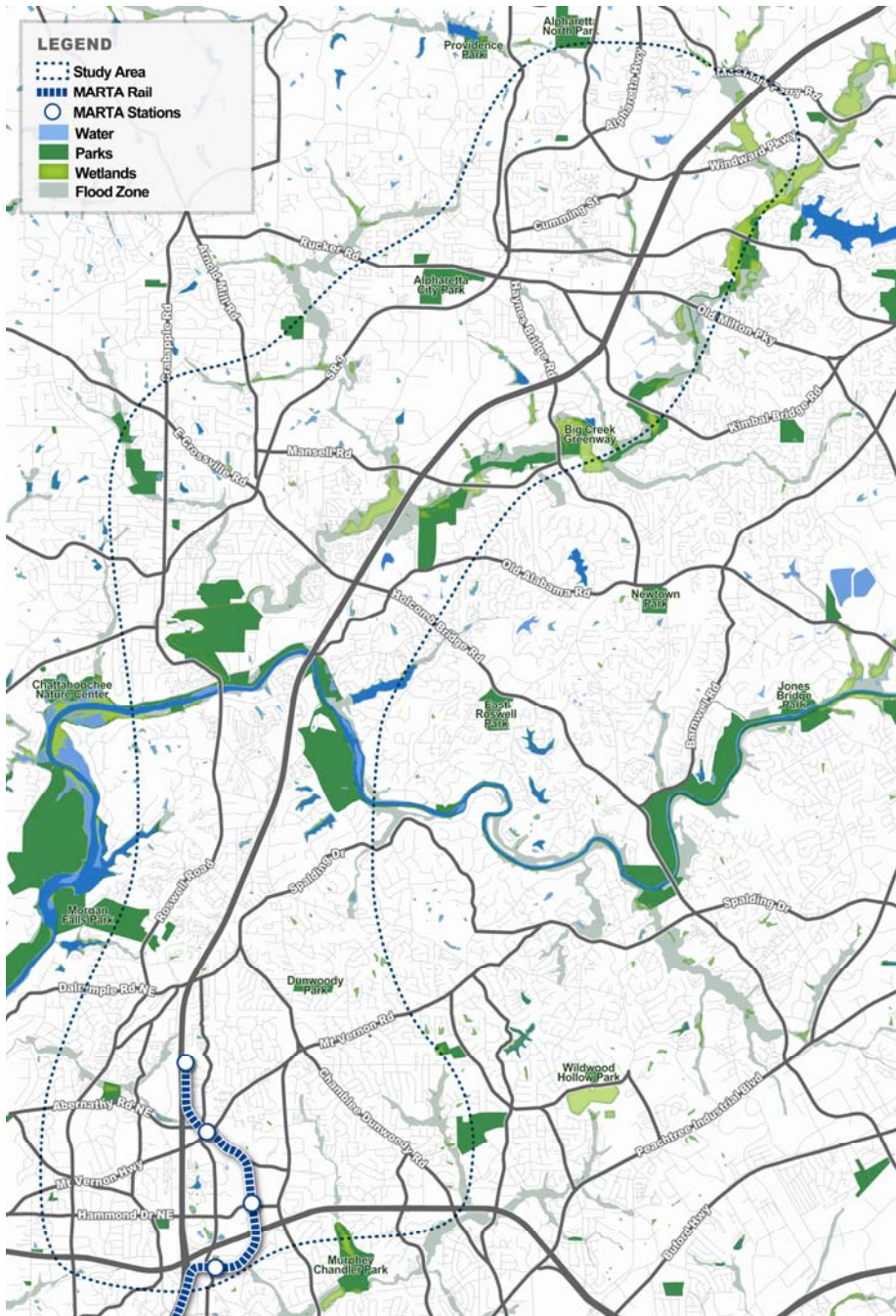




- 15

Goal #4: Minimize Environmental Impact

- Interconnected wetlands/park system
- Avoid, minimize and mitigate impacts on the community and its resources



Why is Transportation and Land Use Important?

TRANSIT PILL?
NO THANKS... I'LL
JUST LIVE WITH
THE CARS A
WHILE LONGER.

POWELL
6/24/97

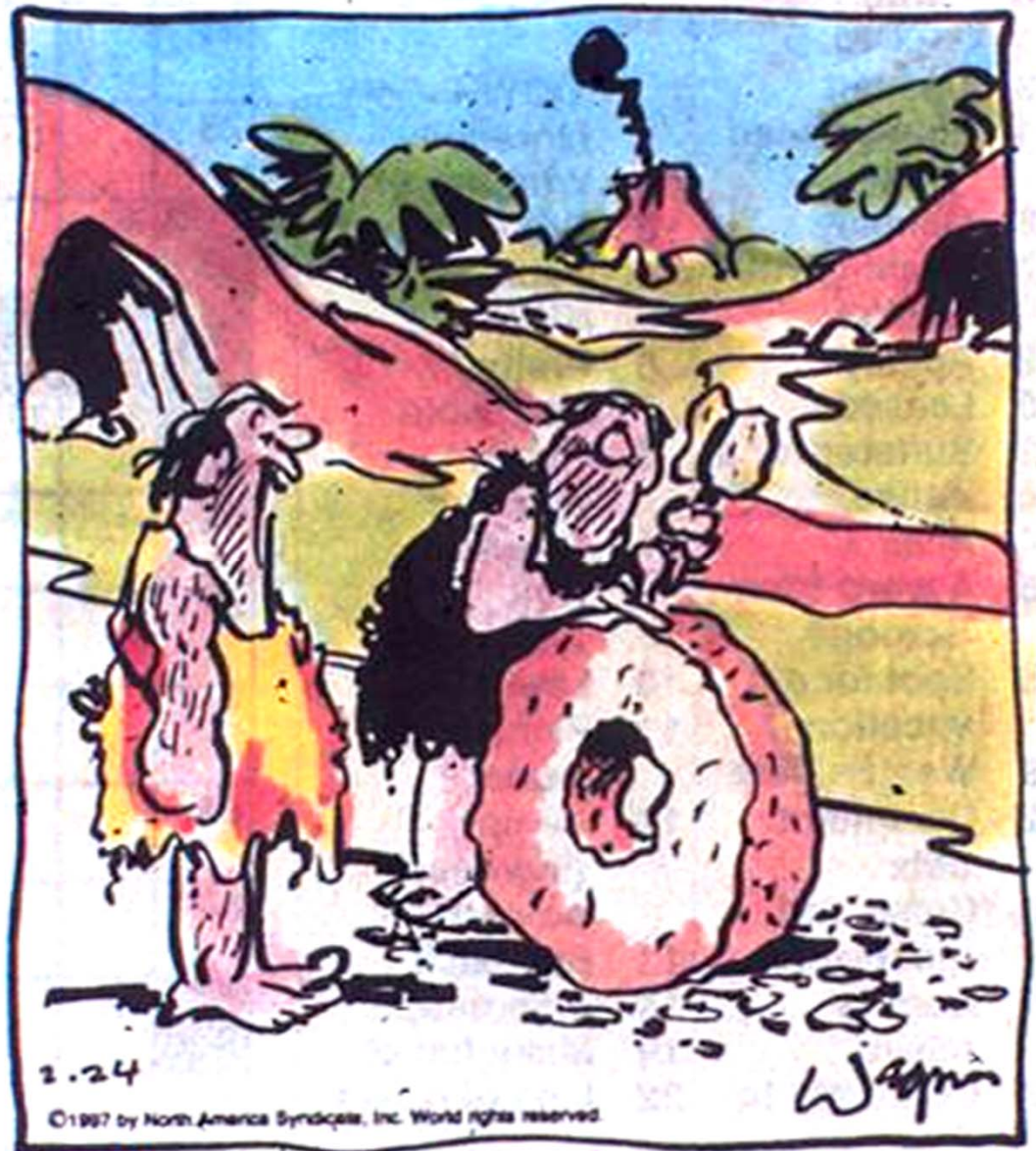


Transportation investments are powerful and far-reaching.

Transportation accounts for **18%** of spending by the average household in America - as much as for food and health care combined.

Grin & Bear It

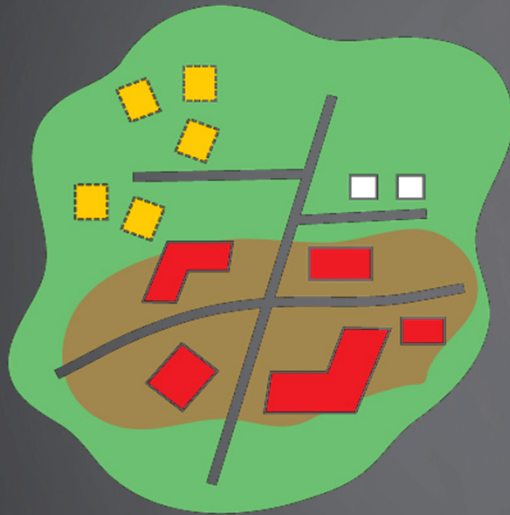
By Fred Wagner



"We're gonna need roads...lots of 'em!"

Conventional Approach

Land Use

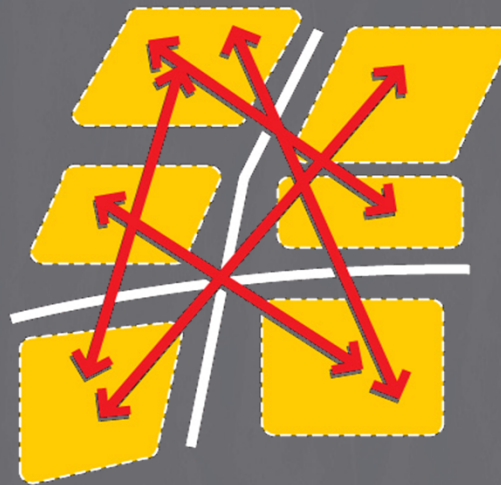


Anticipate

Travel

generates

demands



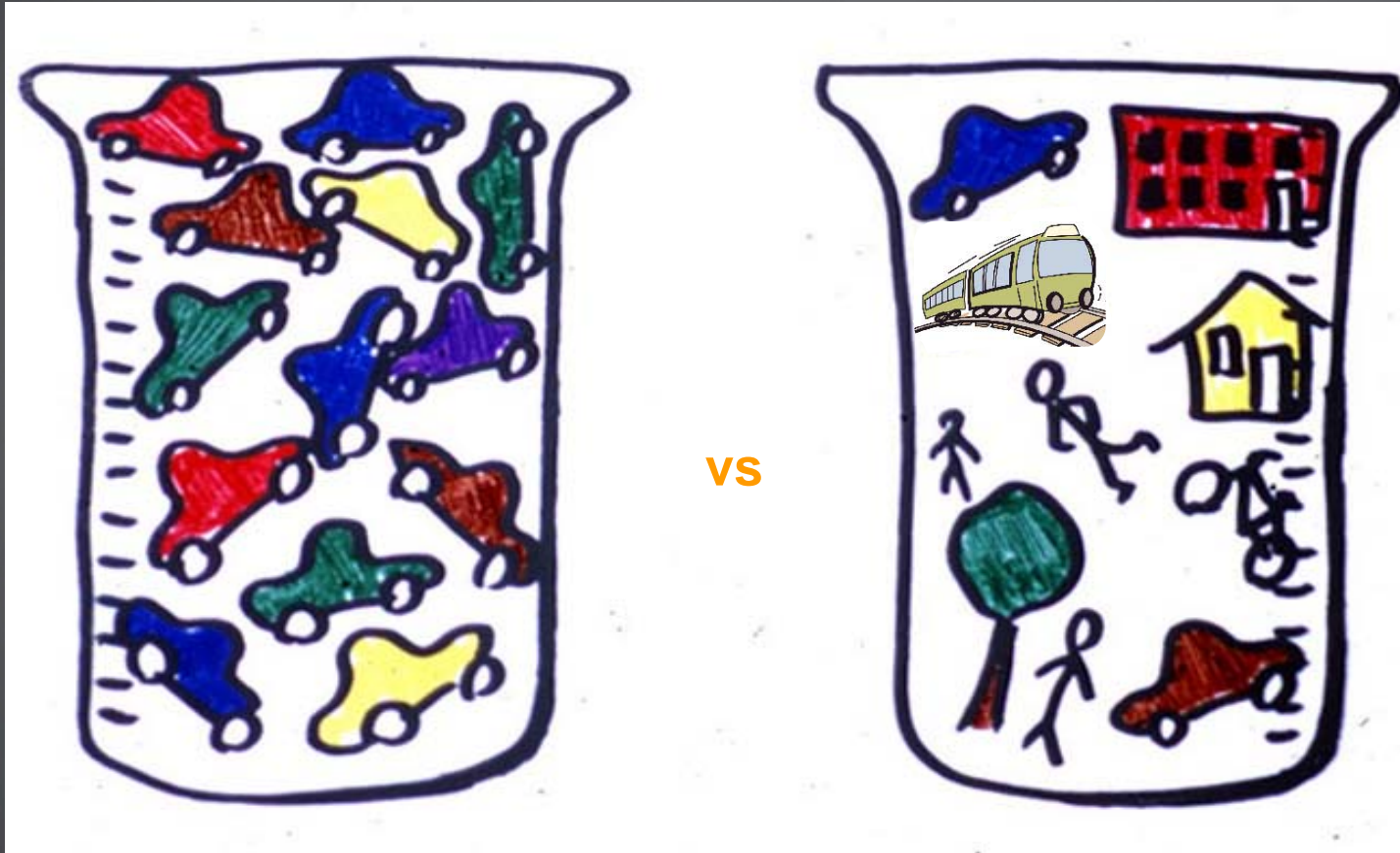
Forecast
(Based on Speed)

Road Capacity



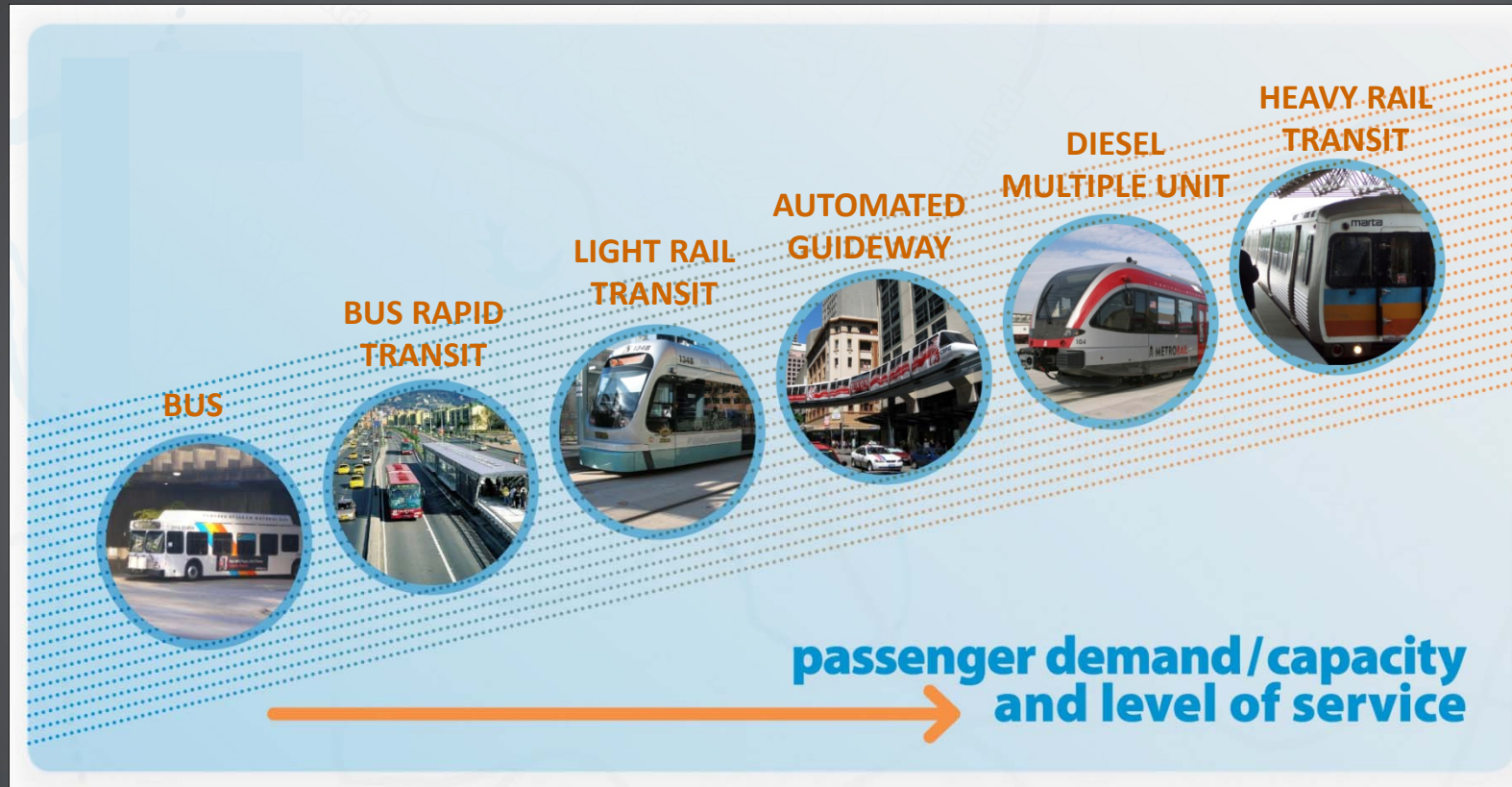
Accommodate

Alternative Transportation Approach

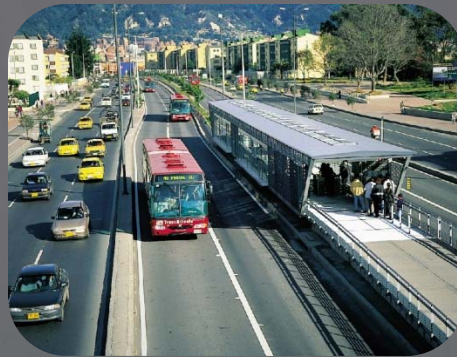


What are Transit Modes

Transit Modes



Transit Considerations



Question and Answer Session

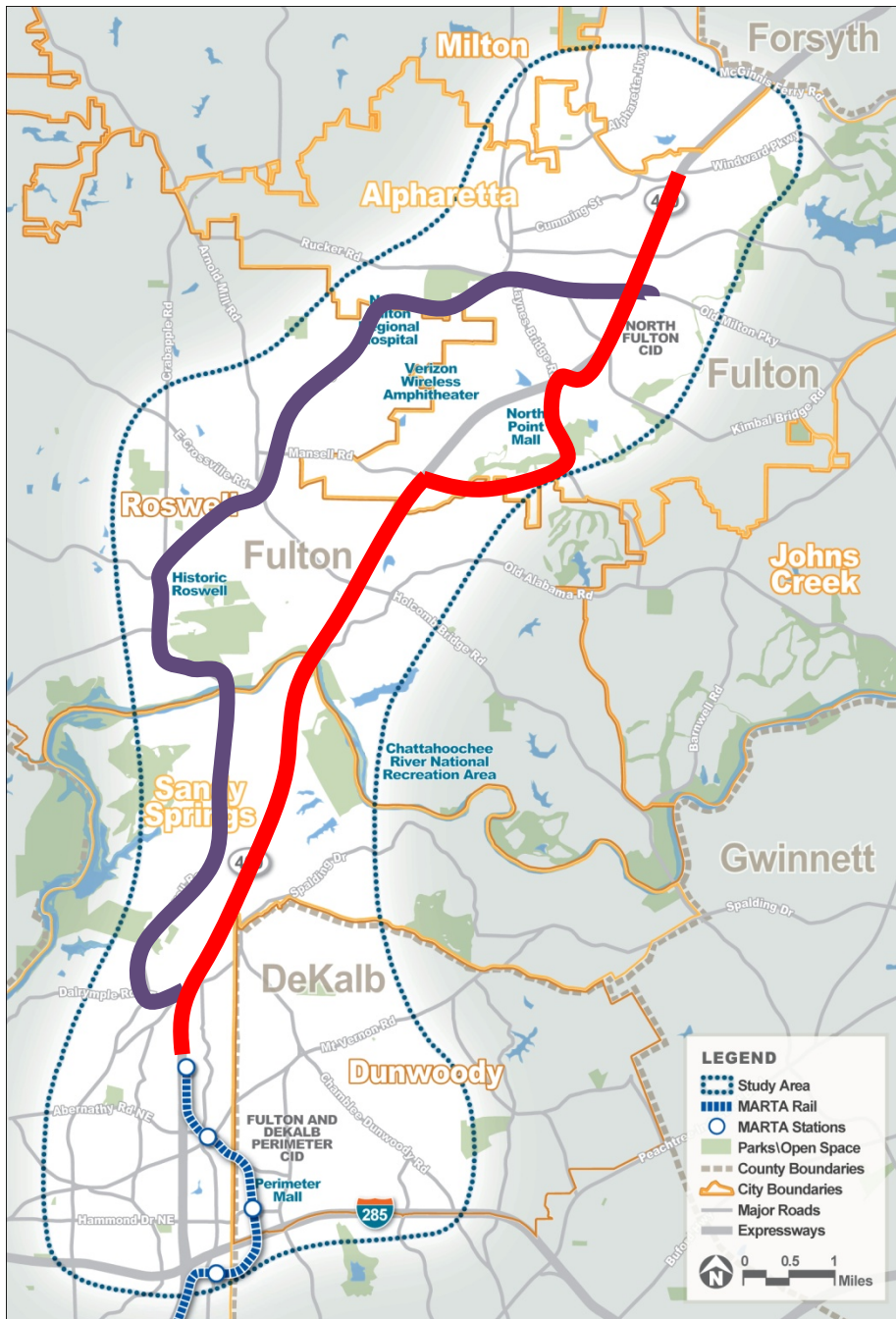
Your Input

Breakout Session

What are your Potential Transit Connection Options?

Keep in Mind:

- Goals and Objectives
- Where Are the Transit Opportunities?



Moving Forward

Next Steps

- Next Public Meeting – Summer

Other Input Opportunities

Let us know if....

- Are there organizations that would benefit from a presentation about this project?
- Are you a local liaison that would distribute project information to your organization?

Connect 400 Contact

Jason Morgan, MARTA Project Manager

Connect400@itsmarta.com

Follow us at Connect 400 on facebook

www.itsmarta.com/north-line-400-corr.aspx

