

# TRACK RENOVATION PHASE IV: Running Rail, Switch Steel, Tie & Fastener Replacement

ANTHONY RIVIERE – SENIOR PROJECT MANAGER

KELI DAVIS - DIRECTOR FACILITIES, CAPITAL DELIVERY PROGRAM

---

MARTA Riders' Advisory Council  
December 7, 2022



# Rail components are subject to extreme stress and have a limited life span:

Rail Fasteners



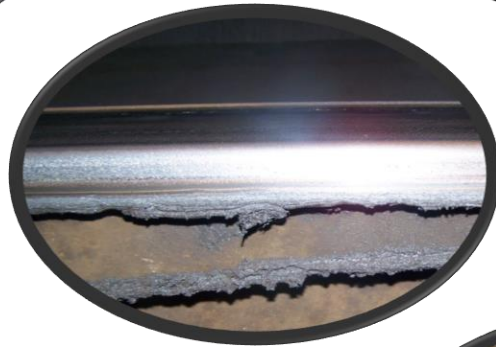
Turnouts



Contact Rail & Cover Board



Running Rail



Cross Ties



Switches



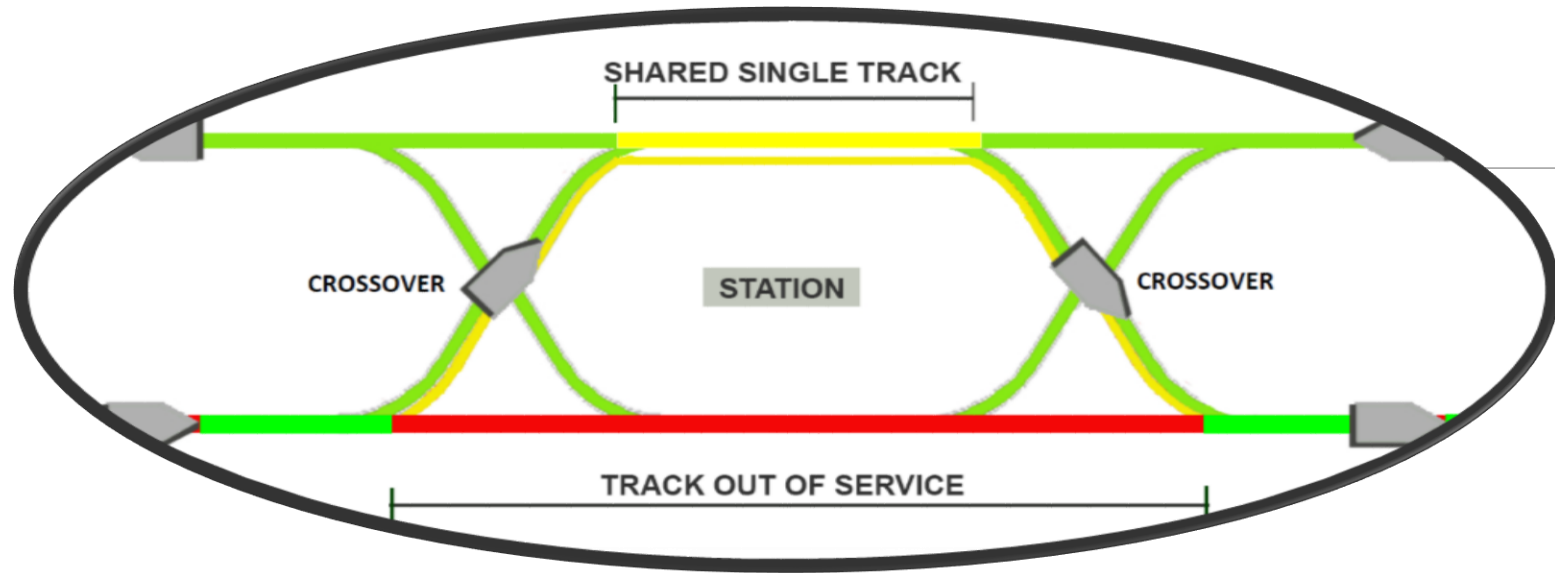
Ballast



Crossovers



The replacement of most of these components can be performed while the system is in operation. This is accomplished by single tracking around the area.



Since single tracking creates delays in service, Operational SOP defines when these events may be implemented.

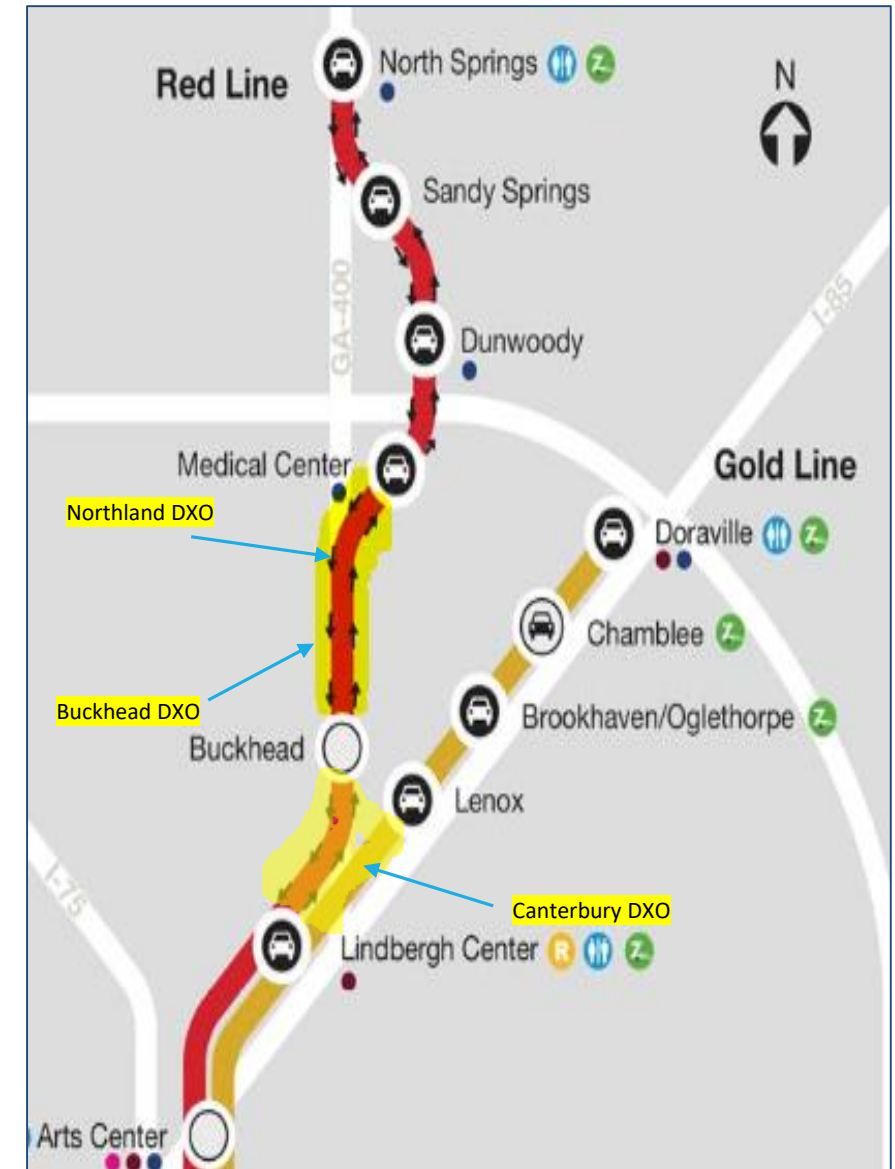
Type	Hrs.	Start / End Times
<b>Long Weekend</b>	54	Fri 9:30P - Mon 4:00A
<b>Short Weekend</b>	30	Fri 9:30P - Sun 4:00A Sat 9:30P - Mon 4:00A
<b>Week Night</b>	6	9:30P - 4:00A
<b>Non-Revenue</b>	2	2:00A - 4:00A

# The Authority has a phased approach to Rail Renovation and Replacement

Project	Dates	Running Rail	Fasteners	Cross Ties	Contact Rail	Switch Steel	Crossovers	Turnouts
TR (Phase I)	1999 – 2003	✓	✓	✓				
TR II	2003 – 2006		✓	✓	✓	✓		
TR III	2011 - 2015	✓	✓	✓	✓		✓	✓
TR IV	2018 – 2026	✓	✓	✓	✓	✓	✓	✓

The most challenging part of the TR IV project is the replacement of three (3) diamond crossovers (DXO):

Location	Dates
Canterbury DXO	February 11 – 17, 2021
Northland DXO	February 18 – 24, 2022
Buckhead DXO	February 17 - 22, 2023







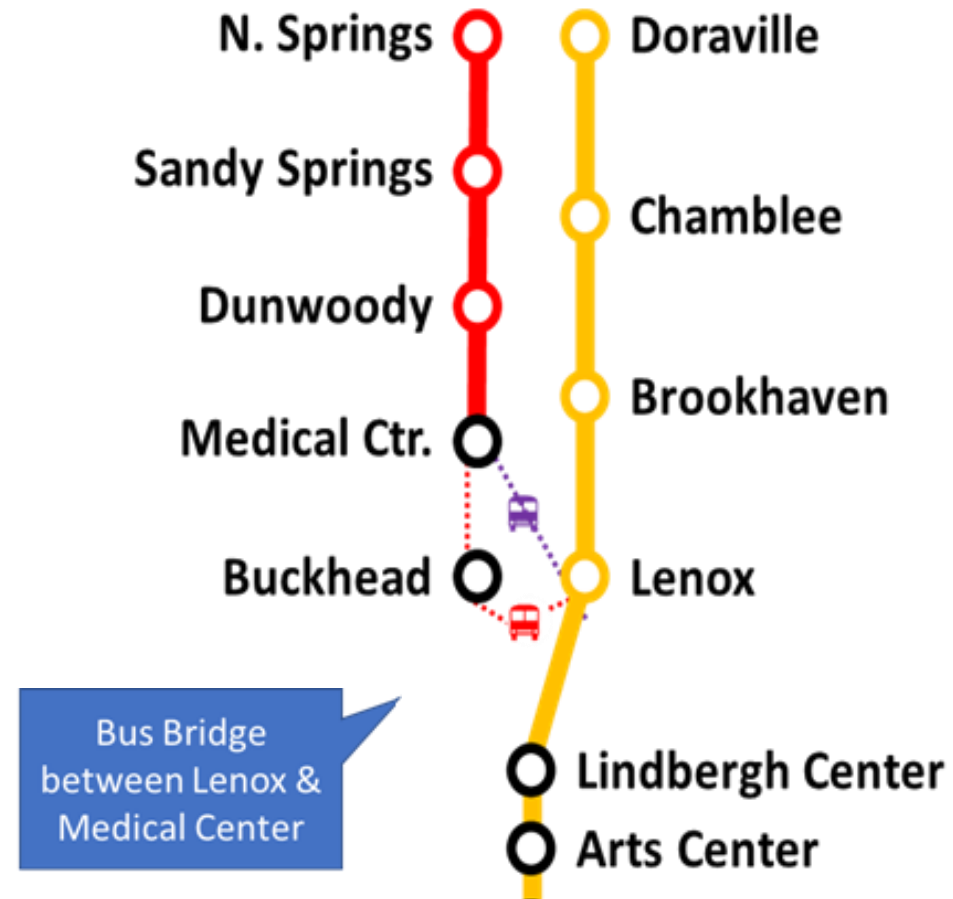
TR IV will start on Friday Feb. 17, 2023 at 9:30 p.m. thru Thursday Feb. 23, 2023 at 4:00 a.m. The 5-day rail outage will occur all day **Saturday, Sunday, Monday, Tuesday, and Wednesday**. Single tracking will occur Thursday Feb. 23 through the end of service Saturday Feb. 25, 2023; all tracks will be returned to service at 5:00 a.m., Sunday Feb. 26, 2023.

 = Express Bus Bridge serving:

- Lenox
- Medical Center

 = Local Bus Bridge serving:

- Lenox
- Buckhead
- Medical Center







## Transit Ambassadors

To minimize customer inconvenience during TR IV and other major events, MARTA enlists administrative staff – and Riders' Advisory Council members – to serve as ambassadors.

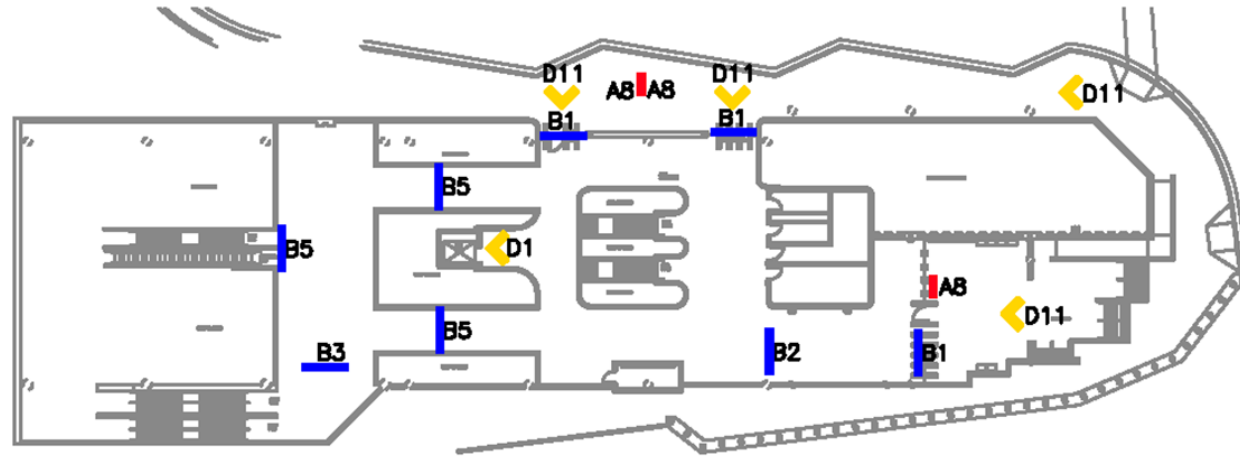
The volunteer ambassadors improve the ridership experience by:

- Greeting customers
- Giving directions
- Helping with BVMs
- Enhancing visibility



# Examples of Station Wayfinding Signage

Lindbergh Center Station



**Track Replacement**
**Red Line Service Impact**
**Feb 18 - Feb 23**

**RED Line Service SUSPENDED Between Airport And Medical Ctr Stations**

**- NO RED LINE TRANSFER -**  
Transfer at LENOX Station For Bus Shuttle to RED Line Stations

**N**

**NO HAY SERVICIO DE TRANSFERENCIA PARA LÍNEA ROJA**  
Transferencia a la estación LENOX para tomar autobús de traslado a estaciones de línea ROJA

Banner B5

**Track Replacement**
**Feb 18 - Feb 23**

**Red Line Service Impact**

Take **GOLD** Line Northbound Train To LENOX For RED Line Stations North of Lindbergh

**EXPRESS Service**  
• Lenox  
• Dunwoody

**LOCAL Service**  
• Lenox  
• Buckhead (Bus Service Only)  
• Medical Center (Bus Service Only)  
• Dunwoody

Tome el tren de línea **DORADA** a LENOX para estaciones de línea **ROJA** al norte de **LINDBERGH**

A Frame A8

**Feb 18 - Feb 23**

**RED LINE SERVICE IMPACT**

**N S**

**RED Line Service SUSPENDED Between Airport and Dunwoody Stations**

Servicio de línea **ROJA** SUSPENDIDO entre las estaciones Airport y Dunwoody

**D11**

Decal D11

# Wayfinding Signage Changes

