



Project Steering Committee Meeting

January 18, 2012
Sandy Springs Library



Project Process



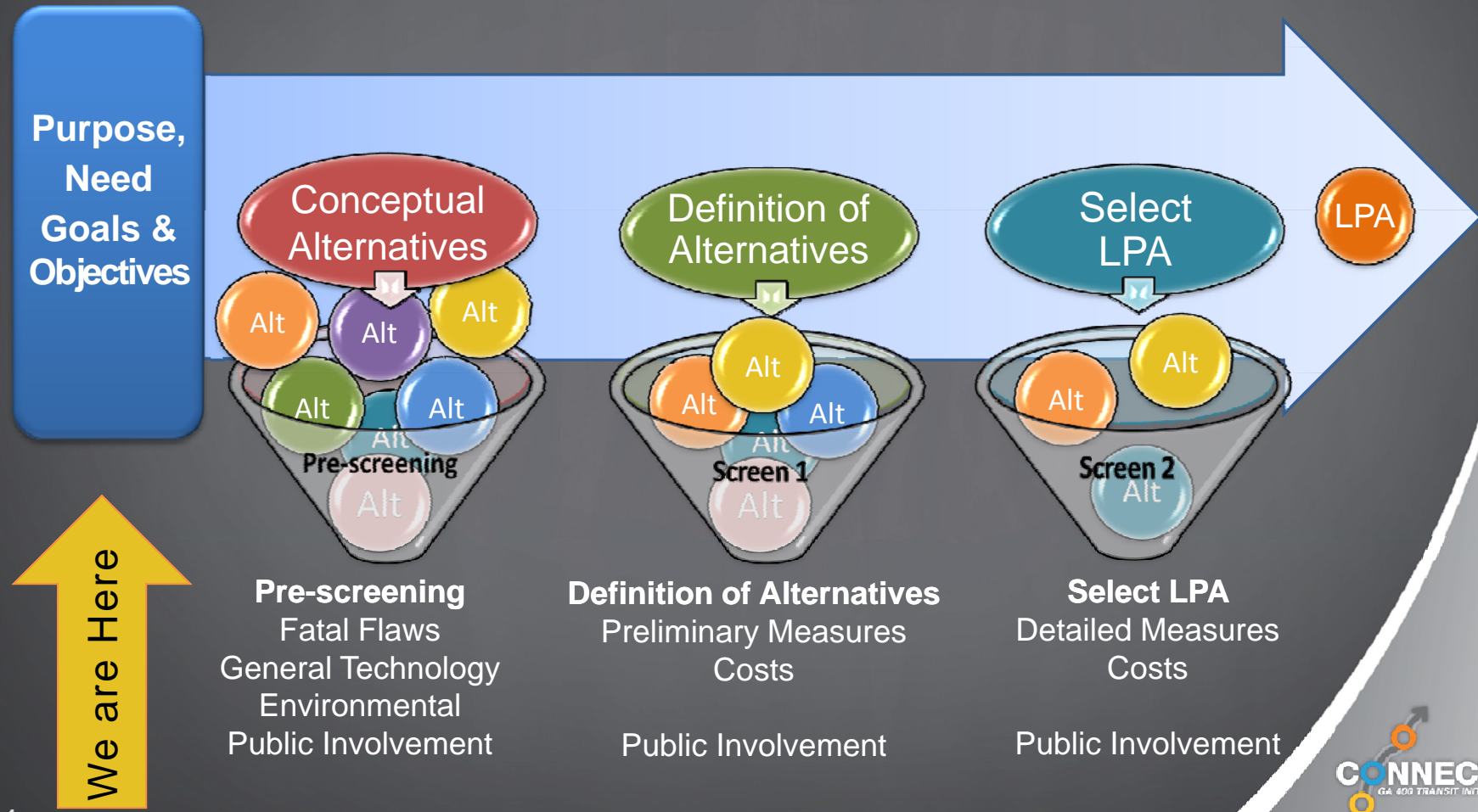
New Starts Project Development Process

Project Development: Typically 6 – 12 years

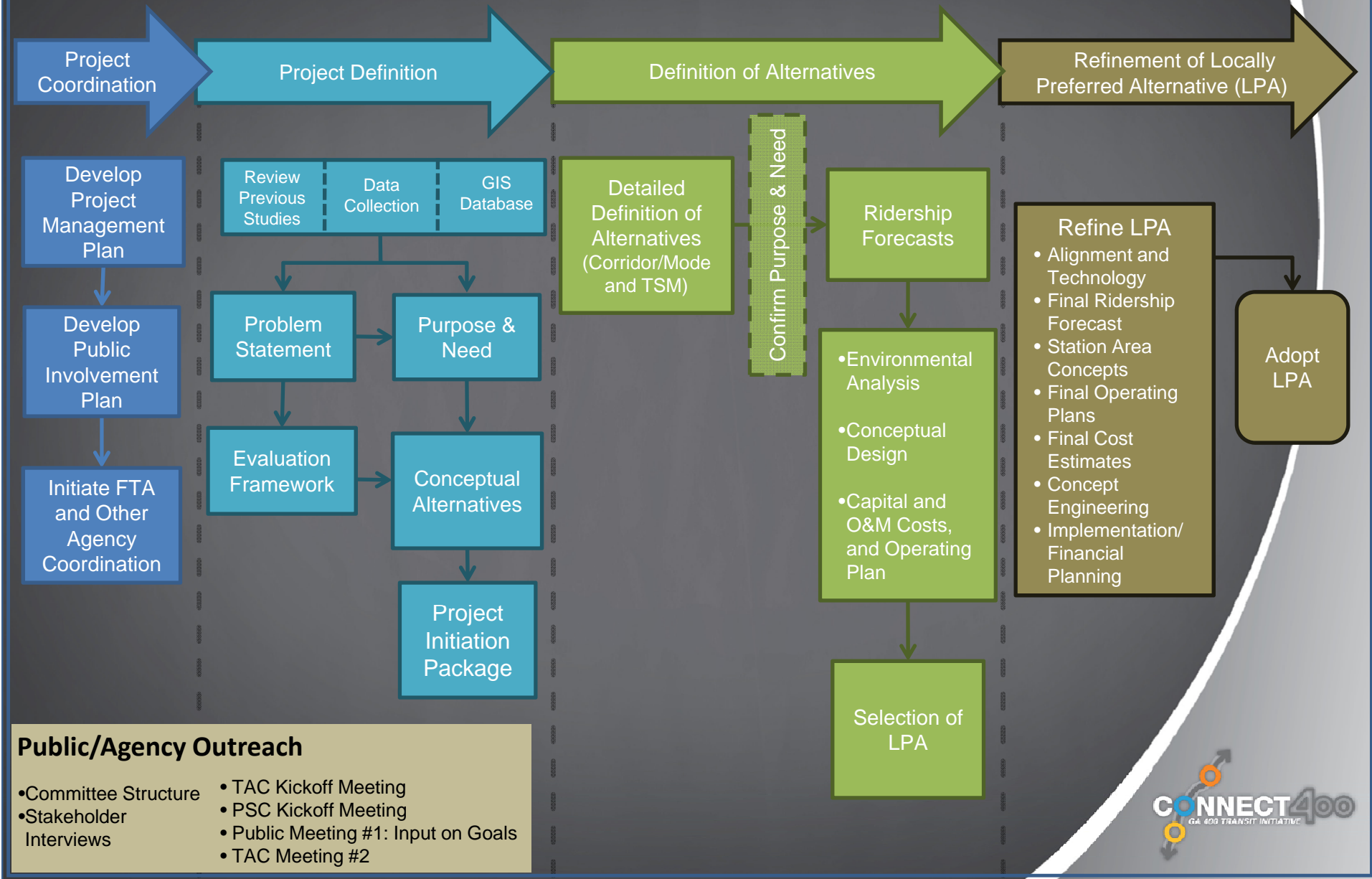


Purpose of the Alternative Analysis (AA)

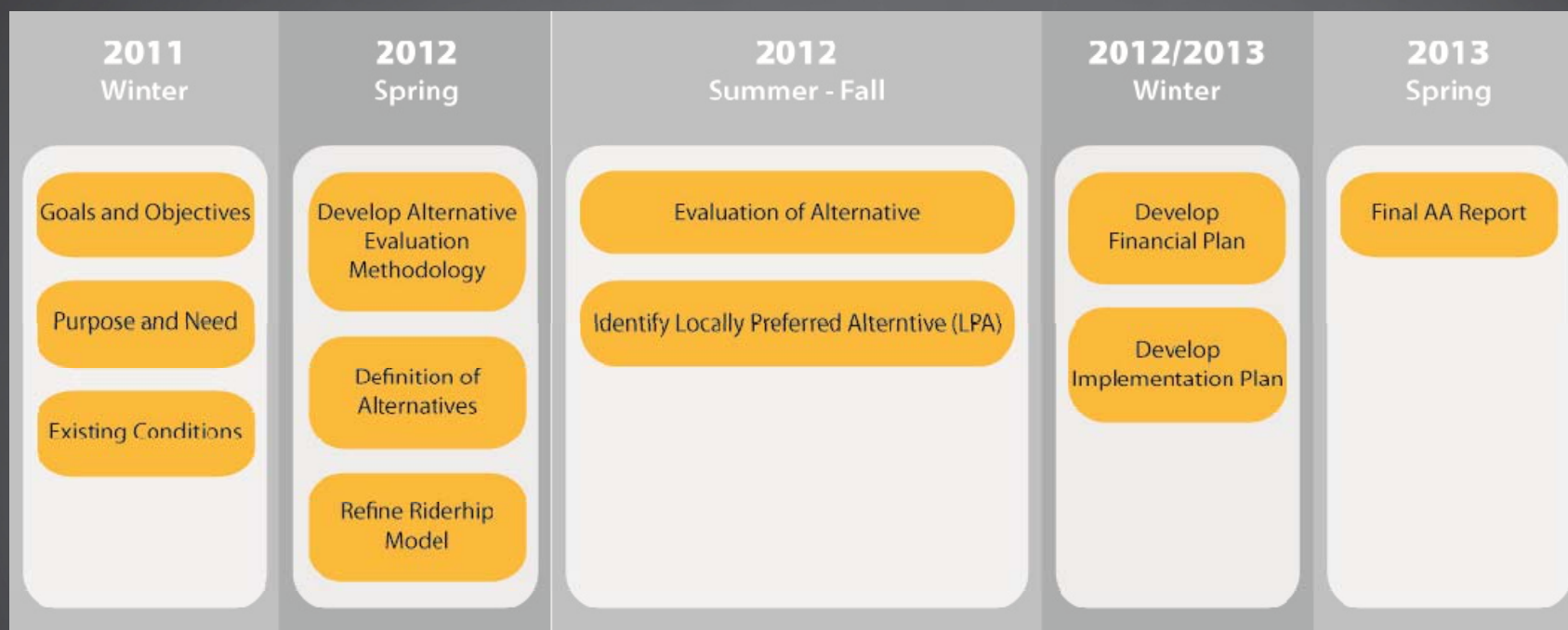
The purpose of the GA 400 AA is to develop, evaluate and select a transit alternative



GA 400 Alternatives Analysis Work Flow



Project Schedule



PSC Roles and Responsibilities

Project Steering Committee

- Help determine purpose and need
- Help develop project goals and objectives
- Review technical data and analysis
- Provide input and guidance



Technical Advisory Committee



- Ensure technical proficiency
- Review technical data and analysis
- Provide input and guidance

Stakeholder Advisory Committee

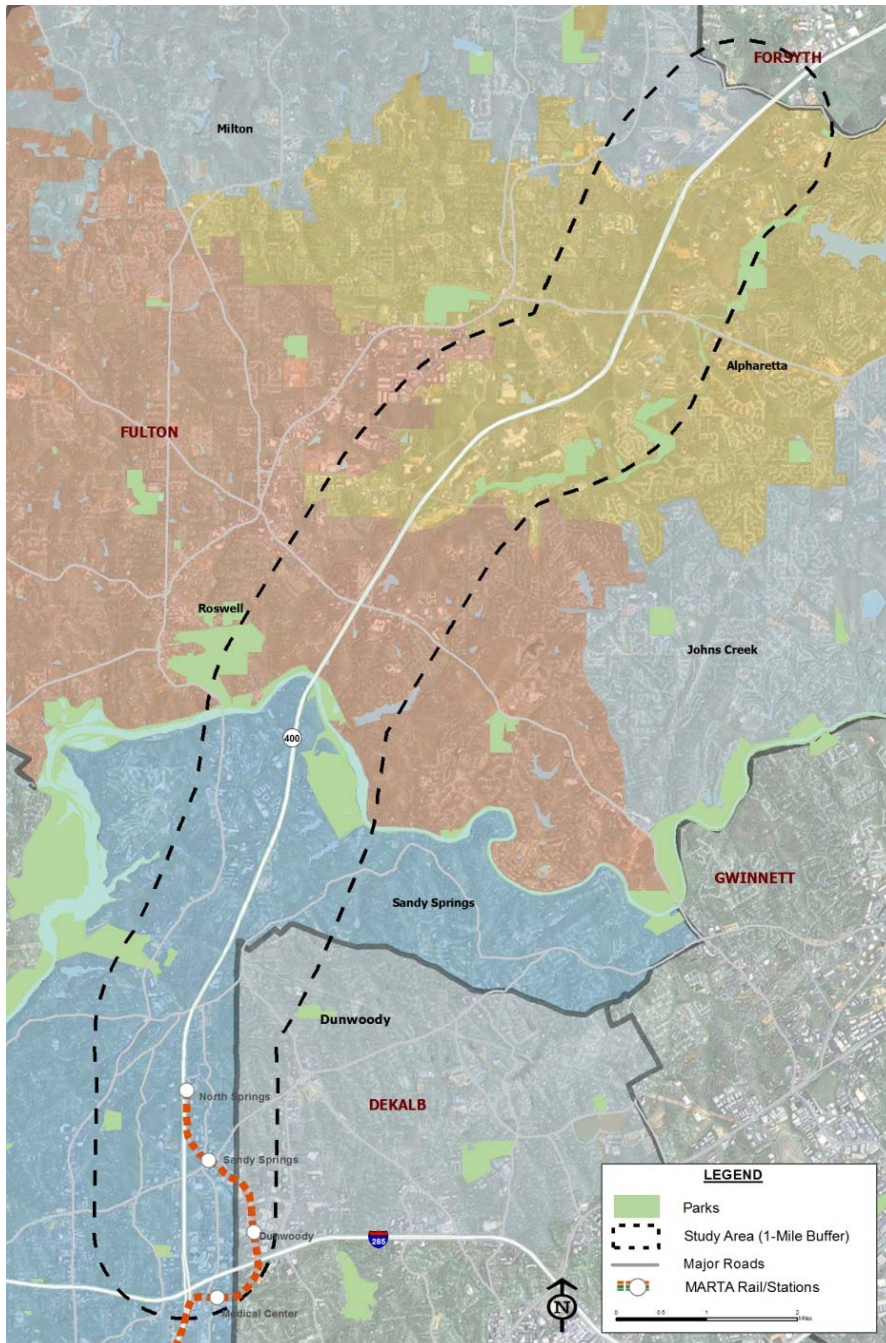
- Offers forum for input for neighborhoods, businesses and community leaders
- Provide input and guidance



Project Background

Study Area

- I-285 to McGinnis Ferry Road
- One-mile either side GA 400
- Study area jurisdictions:
 - Sandy Springs
 - Dunwoody
 - Roswell
 - Alpharetta
 - Milton
 - Forsyth, DeKalb, and Fulton Counties
- Adjacent jurisdictions:
 - Johns Creek
 - Atlanta
 - Gwinnett and Cobb Counties



Key Themes from Existing Conditions

Population

- Increase of 22% last decade
- Additional 10% by 2040

Employment

- 49% increase by 2040
- 2040 employment outpacing population in real numbers

Community Diversity

- Over 40% minority population in the study area
- Concentrations at Holcomb Bridge intersection and City of Sandy Springs

Land Use

- Mostly residential

Congestion

- Worsens by 2040 even with additional capacity

Travel Patterns

- Twice as many trips destined to study area than leaving study area
- Half of trips starting in study area also end in study area

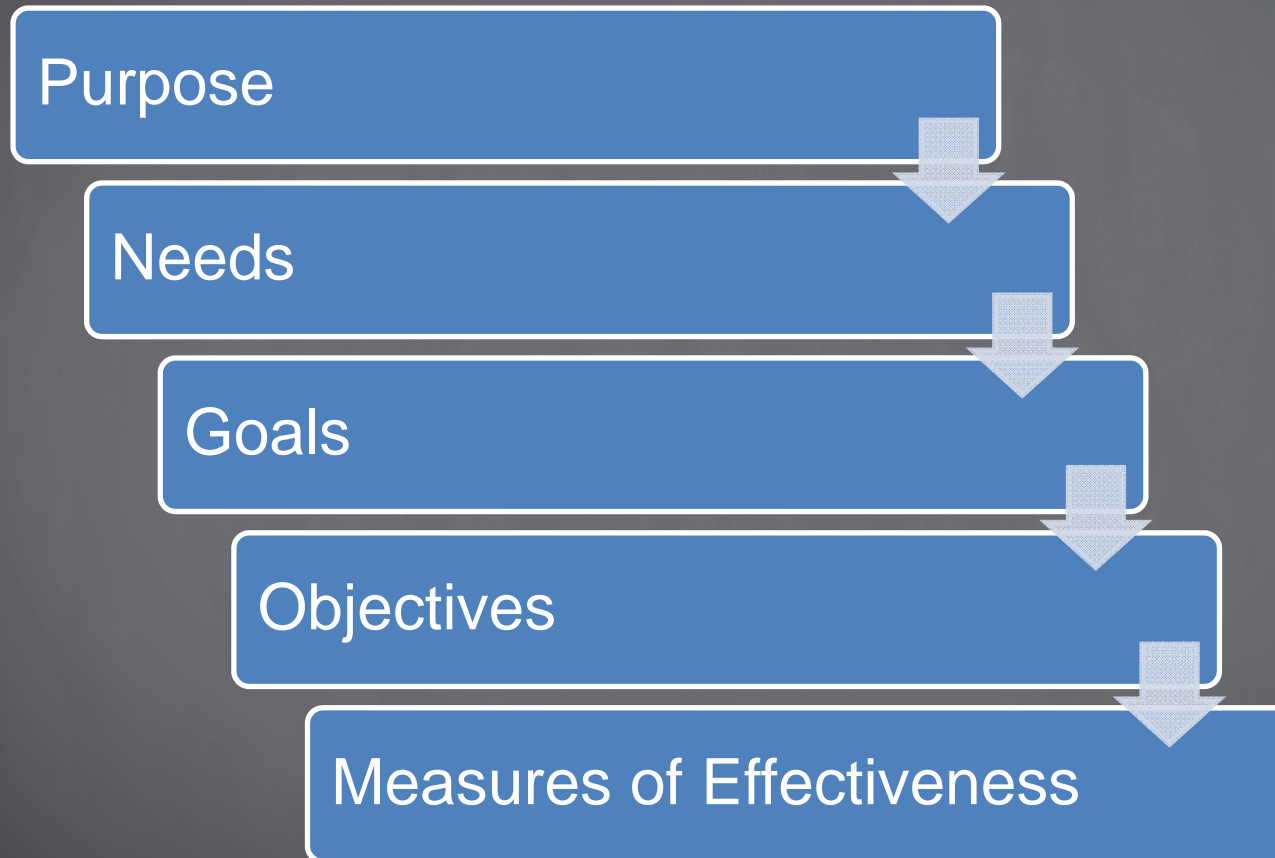
Existing Transit

- Rail in south
- Bus and park-and-ride in north

Environment

- Chattahoochee River crossing
- Interconnected wetlands / park system

Evaluation Framework



Purpose and Need

DRAFT Purpose:

- Provide fast, reliable and efficient transit service to move people both through and within GA 400 corridor
- Enhance transit accessibility and connectivity at activity centers
- Encourage transit supportive land use policies
- Support economic development and land use planning goals

Top Challenges in the Study Area

Identified by Technical Advisory Committee

Kick-Off Meeting, December 13, 2011

- Limited north-south roadway connectivity
- Traffic congestion
- Congestion at I-285
- Need for alternative modes of transportation
- Need for various types of transit
- Lack of transit service to large population
- Connectivity to transit in northern study area
- Negative perception of transit
- Land use not transit supportive
- Funding shortfall for transportation

Why Goals and Objectives?

They serve as:

- Response to “Key Themes” of existing conditions analysis
- Guidance in developing project alternatives
- Basis for comparing alternatives
- Source for identifying measures that objectively evaluate effectiveness of alternatives
- Means to highlight performance distinctions of alternatives
- Essential component to identify LPA
- Recognition of FTA New Starts evaluation criteria

Moving Forward



Question and Answer Session



Breakout Groups

1. Is State Route 9 a feasible alignment to study high-capacity transit (i.e. bus rapid transit or various rail transit modes?)
2. Are there redevelopment nodes, not identified in previous studies or reports, that could support increased land use intensity and transportation connectivity, such as bicycle, pedestrian, and new street connections?
3. Are there political commitments for transit supportive redevelopment?

Next Steps

- Stakeholder interviews – January 2012
- Public meetings – January 2012
- Stakeholder corridor tour – TBD